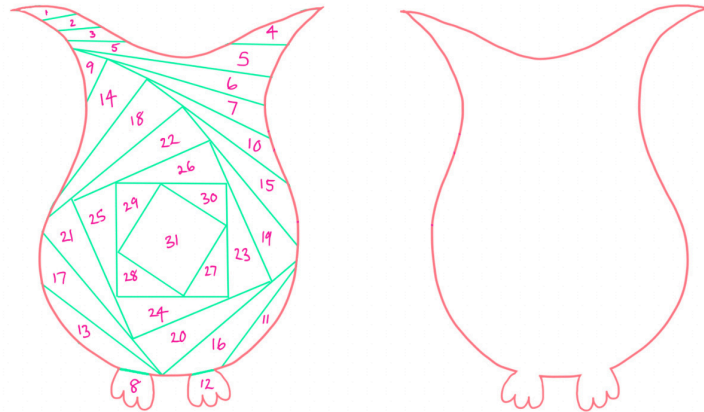




IRIS FOLDING: OWL PATTERN



ADD ON EYES USING
CARD OR GOOGLY
EYES



MAKE SURE TO START AT NUMBER 1 AND FOLLOW THE NUMBERS UP IN ORDER -
DON'T DO ONE COLOUR AT A TIME.

PATTERN (COLOURS ARE SUGGESTIONS)

COLOUR A

1, 2, 3, 4, 5, 6, 7, 10, 15, 19, 23, 27.

FEET (COLOUR B)

8, 12

COLOUR C

9, 14, 18, 22, 26, 30

COLOUR D

11, 16, 20, 24, 28

COLOUR E

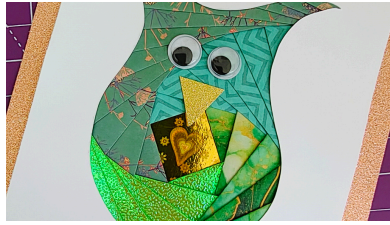
13, 17, 21, 25, 29

SPARKLE CARD P

31



FEEL FREE TO USE ANY COLOURS
YOU WOULD LIKE.



IRIS FOLDING INSTRUCTIONS

WHAT YOU NEED

- PATTERN
- CARD WITH OUTLINE CUT OUT – YOU CAN USE A CRAFT KNIFE OR CUTTING MACHINE
- BLUE TACK
- SCISSORS
- TAPE (BEST TO BE IN A HEAVY TAPE DISPENSER THAT YOU CAN USE WITH ONE HAND)
- PAPER (ORIGAMI PAPER WORKS WELL OR USE RECYCLED MATERIALS – INSIDE OF ENVELOPES/ USED PACKAGING MATERIALS)
- SPARKLY CARD (OPTIONAL)
- OPTIONAL – CARD, CARD BLANK AND ENVELOPE FOR MOUNTING
- FINE LINER/ FELT PEN/ PENCIL/ GOOGLE EYES/ PAPER/ CARD FOR DETAIL

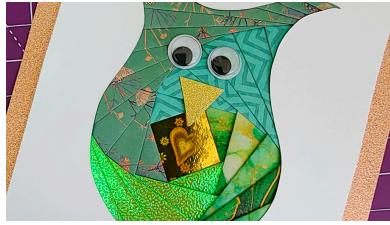
WHAT TO DO

- 1 BLUE TACK YOUR PATTERN TO THE SURFACE YOU ARE WORKING ON
- 2 BLUE TACK YOUR APERTURE OVER YOUR PATTERN (YOU WILL BE WORKING ON THE BACK OF THE CARD)
- 3 DON'T LIFT UP YOUR WORK UNTIL IT'S COMPLETED – WAIT FOR THE 'BIG REVEAL'
- 4 WORK FROM NUMBER 1 AND GO UP IN ORDER OF NUMBERS (DO NOT WORK ON ONE COLOUR AT A TIME)
- 5 CUT STRIPS OF PAPER AROUND 1.5CM IN WIDTH
- 6 MAKE A FOLD IN THE PAPER AROUND ONE THIRD TO TWO THIRDS OF THE WIDTH (SEE IMAGE BELOW)



NEAT FOLD

- 7 PLACE NEAT FOLD ON THE LINE OF THE PATTERN AND COMPLETELY COVER WITH THE PAPER THE NUMBER THAT YOU ARE ON
- 8 SECURE IN PLACE WITH TAPE MAKING SURE NOT TO COVER ANY OF THE APERTURE (HOLE). THE FINAL NUMBER WILL BE YOUR SPARKLY CARD – YOU DON'T NEED TO FOLD THIS
- 9 COMPLETE THE PATTERN AND THEN GENTLY PEEL OFF THE BLUE TACK TO REVEAL YOUR BEAUTIFUL IRIS FOLDING. FINAL STEPS – ADD DETAILS (EYES/ BEAK) USING FINE LINER, GOOGLE EYES, CARD ETC. MOUNT AS YOU WISH.



ACTUAL SIZE OF PATTERN

THIS IS THE ACTUAL SIZE OF PATTERN I USED
BUT YOU CAN INCREASE AND REDUCE AS REQUIRED

